

Panasonic

DSS Console and DSS Console for Attendant
for Digital Super Hybrid Systems

Reference Guide

Model **KX-T7440/KX-T7441**



<KX-T7440>



<KX-T7441>

**Please read this manual before using the DSS Console
and DSS Console for Attendant.**

*Thank you for purchasing the Panasonic DSS Console
and DSS Console for Attendant.*

Contents

Preparation.....	2
Connection.....	2
Location of Controls.....	3
Attaching a Proprietary Telephone.....	3
Wall Mounting.....	4
Important Safety Instructions	5
FCC and Other Information	7

Preparation

The KX-T7440 Direct Station Selection (DSS) Console and KX-T7441 DSS Console for Attendant can be connected to Digital Super Hybrid Systems (DSHS). This requires a DSHS Digital Proprietary Telephone (e.g. KX-T7420, KX-T7425, KX-T7431, KX-T7433, KX-T7436) for proper operation.

The DSS Console can work with any Panasonic Proprietary Telephone. The DSS Console and the paired proprietary telephone should be placed next to one another.

The DSS Console must be connected directly to the main unit.

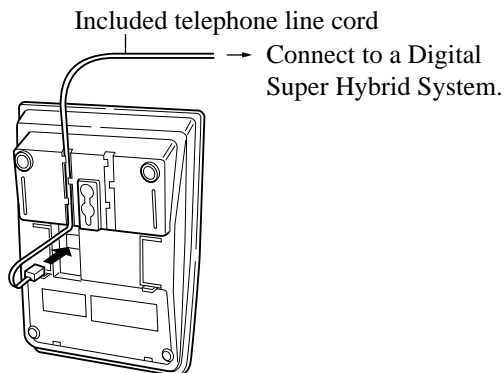
Note: – A standard telephone cannot be used with the DSS Console.

Accessories

Telephone line cord.....	1	Plate	1
Screws	2		

Connection

Connect as shown.
For more details, refer to the Installation Manual of the Panasonic Digital Super Hybrid System.



Location of Controls

DSS Buttons with Busy Lamp Field (BLF):

The KX-T7440 has 66 DSS buttons and the KX-T7441 has 48 DSS buttons.

To access an extension, simply press a DSS button.

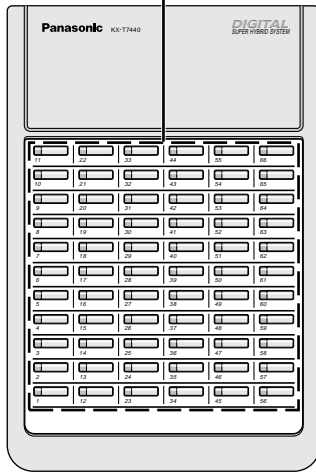
These buttons also can be assigned for one-touch dialing.

The BLF indicates the current status of the corresponding extension.

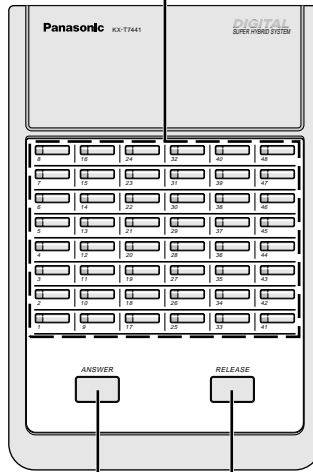
Off : Idle

Red: Busy

■ KX-T7440



■ KX-T7441



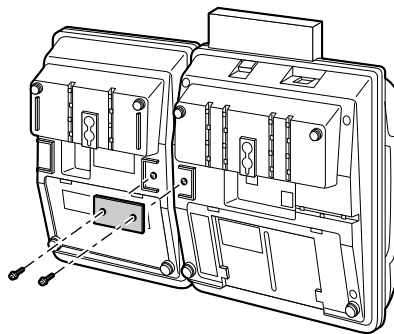
ANSWER Button
Used to answer an incoming call.

RELEASE Button
Used to disconnect the line.

Attaching a Proprietary Telephone

This unit can be connected to a Panasonic digital proprietary telephone.

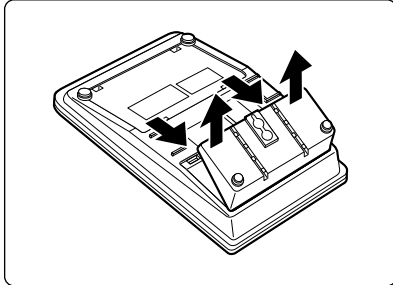
Use the attached plate and screws.



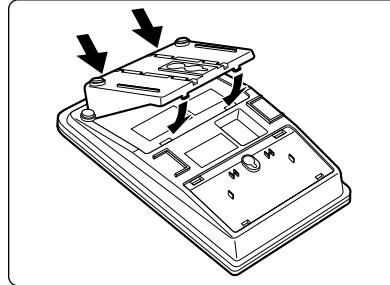
Wall Mounting

This unit can be mounted on a wall.

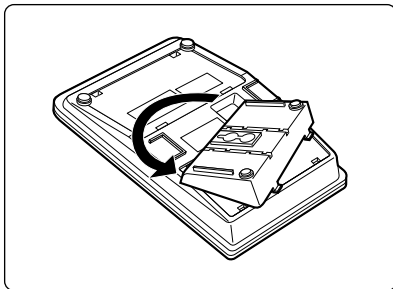
1 Remove the attached stand.



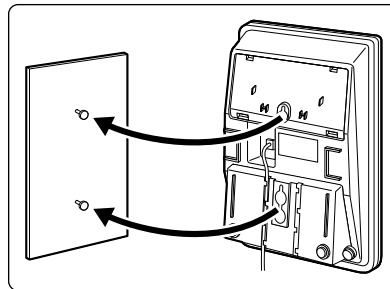
3 Attach the stand.



2 Turn the stand in the opposite direction.



4 Mount the unit on the wall phone plate.



Important Safety Instructions

When using your telephone equipment, basic safety precautions should always be followed to reduce the risk of fire, electric shock and injury to persons, including the following:

1. Read and understand all instructions.
2. Follow all warnings and instructions marked on the product.
3. Unplug this product from the wall outlet before cleaning. Do not use liquid cleaners or aerosol cleaners. Use a damp cloth for cleaning.
4. Do not use this product near water, for example, near a bath tub, wash bowl, kitchen sink, or laundry tub, in a wet basement, or near a swimming pool.
5. Do not place this product on an unstable cart, stand, or table. The product may fall, causing serious damage to the product.
6. Slots and openings in the cabinet and the back or bottom are provided for ventilation, to protect it from overheating, these openings must not be blocked or covered. The openings should never be blocked by placing the product on the bed, sofa, rug, or other similar surface. This product should never be placed near or over a radiator or heat register. This product should not be placed in a built-in installation unless proper ventilation is provided.
7. Do not allow anything to rest on the telephone cord. Do not locate this product where the cord will be abused by persons walking on it.
8. Do not overload wall outlets and extension cord as this can result in the risk of fire or electric shock.
9. Never push objects of any kind into this product through cabinet slots as they may touch dangerous voltage points or short out parts that could result in a risk of fire or electric shock. Never spill liquid of any kind on the product.
10. To reduce the risk of electric shock, do not disassemble this product, but take it to a qualified serviceman when some service or repair work is required. Opening or removing covers may expose you to dangerous voltages or other risks. Incorrect reassembly can cause electric shock when the appliance is subsequently used.
11. Unplug this product from the wall outlet and refer servicing to qualified service personnel under the following conditions:
 - A. When the power supply cord or plug is damaged or frayed.
 - B. If liquid has been spilled into the product.
 - C. If the product has been exposed to rain or water.

Important Safety Instructions

- D. If the product does not operate normally by following the operating instructions. Adjust only those controls, that are covered by the operating instructions because improper adjustment of other controls may result in damage and will often require extensive work by a qualified technician to restore the product to normal operation.
 - E. If the product has been dropped or the cabinet has been damaged.
 - F. If the product exhibits a distinct change in performance.
12. Avoid using a telephone (other than a cordless type) during an electrical storm. There may be a remote risk of electric shock from lightning.
13. Do not use the telephone to report a gas leak in the vicinity of the leak.

SAVE THESE
INSTRUCTIONS

FCC and Other Information

NOTE:

This equipment has been tested and found to comply with the limits for a Class B digital device, pursuant to Part 15 of the FCC Rules. These limits are designed to provide reasonable protection against harmful interference in a residential installation. This equipment generates, uses and can radiate radio frequency energy and, if not installed and used in accordance with the instructions, may cause harmful interference to radio communications. However, there is no guarantee that interference will not occur in a particular installation. If this equipment does cause harmful interference to radio or television reception, which can be determined by turning the equipment off and on, the user is encouraged to try to correct the interference by one or more of the following measures:

- Reorient or relocate the receiving antenna.
- Increase the separation between the equipment and receiver.
- Connect the equipment into an outlet on a circuit different from that to which the receiver is connected.
- Consult the dealer or an experienced radio/TV technician for help.

WARNING:

TO PREVENT FIRE OR SHOCK HAZARD, DO NOT EXPOSE THIS PRODUCT TO RAIN OR ANY TYPE OF MOISTURE.

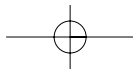
CAUTION:

To assure continued compliance with FCC rules, do not make any unauthorized modifications. When programming emergency numbers and/or making test calls to emergency numbers:

- 1) Remain on the line and briefly explain to the dispatcher the reason for the call before hanging up.
- 2) Perform such activities in the off-peak hours, such as early morning hours or late evenings.

If there is any trouble, disconnect the unit from the extension line and connect a known working phone. If the known working phone operates properly, have it repaired by one of the specified Panasonic Factory Service Centers. If the known working phone does not operate properly, check the Electronic Modular Switching System and the internal extension wiring.

- Keep the unit away from heating appliances and electrical noise generating devices such as fluorescent lamps and motors.
- The unit should be kept free of dust, moisture and vibration, and should not be exposed to direct sunlight.
- Do not use benzine, thinner, or the like, or any abrasive powder to clean the cabinet. Wipe it with a soft cloth.



When you ship the product

Carefully pack and sent it prepaid, adequately insured and preferably in the original carton. Attach a postage-paid letter, detailing the symptom to the outside of the carton. *DO NOT send the product to the Executive or Regional Sales offices. They are NOT equipped to make repairs.*

Product service

Panasonic Servicenters for this product are listed in the servicenter directory. Consult your authorized Panasonic dealer for detailed instructions.

For your future reference

SERIAL NO. _____ DATE OF PURCHASE _____ (found on the bottom of the unit)
NAME OF DEALER _____
DEALER'S ADDRESS _____

**Panasonic Consumer Electronics Company,
Division of Matsushita Electric Corporation of America**
One Panasonic Way, Secaucus,
New Jersey 07094

Panasonic Sales Company ("PSC"), Division of Matsushita Electric of Puerto Rico, Inc.
Ave. 65 de Infantería, Km. 9.5,
San Gabriel Industrial Park,
Carolina, Puerto Rico 00985

Printed in the United Kingdom

PSQX1526ZA KU0898TT0

